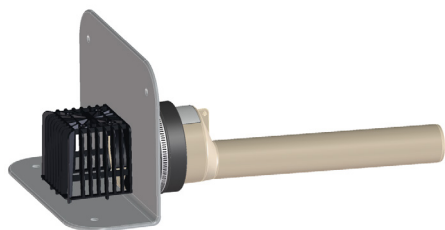
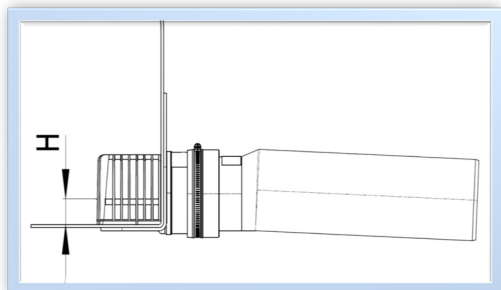


Protoci HL atika slivnika u kombinaciji sa različitim nastavnim elementima prema EN1253-2:2005;5.5.3.1

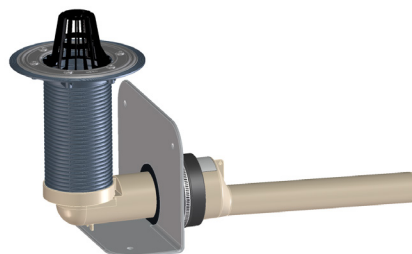
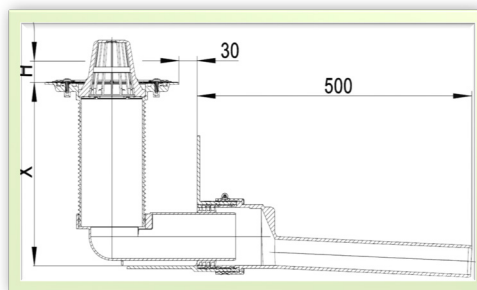


Pic. 1



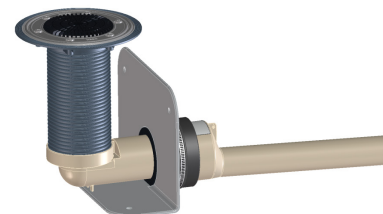
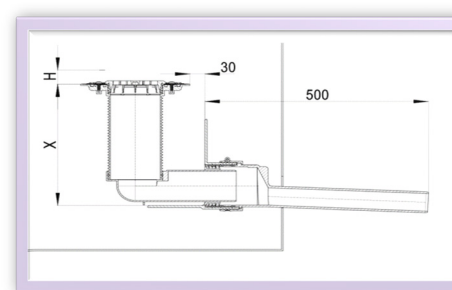
Atika slivnik HL68H.0/DN, HL68P.0/DN, HL68F.0/DN sa hvatačem lišća HLO68.1E ili hvatačem lišća za sigurnosnu odvodnju HLO68.1Safe

Pic. 2



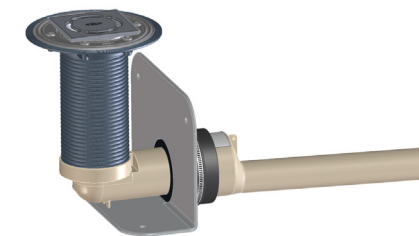
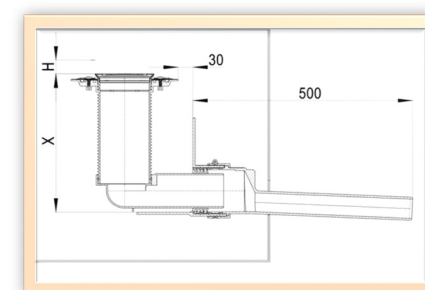
Atika slivnik HL68H.0/DN, HL68P.0/DN, HL68F.0/DN sa HL164, nastavnim elementom HL85N(H) i hvatačem lišća HLO80.8E

Pic. 3



Atika slivnik HL68H.0/DN, HL68P.0/DN, HL68F.0/DN sa HL164, nastavnim elementom HL85N(H) i hvatačem lišća HL181

Pic. 4



Atika slivnik HL68H.0/DN, HL68P.0/DN, HL68F.0/DN sa HL164, nastavnim elementom HL85N(H) i uljevnim nastavkom sa INOX uljevnom rešetkom

Tablett DN 50		Hydraulic l/s from flange											
		5 mm	15 mm	25 mm	35 mm	45 mm	55 mm	65 mm	70mm	75mm	80 mm	90 mm	100 mm
Pic. 1	with leaf catcher, measured above flange	/	/	0,57	0,88	1,20	1,38	1,46	1,61	1,72	1,81	1,96	2
	with emergency leaf catcher, measured min. 35mm higher than flange	/	0,33	0,57	0,86	1,06	1,14	1,22	1,28	1,31	1,35	1,44	1,52
Pic. 2	X = 110 mm with 110mm thermal insulation	-	-	-	1,78	-	-	-	-	2	-	-	2,3
	X = 150 mm with 150mm thermal insulation	-	-	-	2,13	-	-	-	-	2	-	-	2,3
	X = 200 mm with 200 mm thermal insulation	-	-	-	2,25	-	-	-	-	2,48	-	-	2,58
Pic. 3	X = 110 mm with 110mm thermal insulation	-	-	-	1,8	-	-	-	-	2,08	-	-	2,18
	X = 150 mm with 150mm thermal insulation	-	-	-	1,96	-	-	-	-	2,08	-	-	2,18
	X = 200 mm with 200 mm thermal insulation	-	-	-	2,16	-	-	-	-	2,43	-	-	2,52
Pic. 4	X = 110 mm with 110mm thermal insulation	-	-	-	1,31	-	-	-	-	1,76	-	-	1,89
	X = 150 mm with 150mm thermal insulation	-	-	-	1,39	-	-	-	-	1,76	-	-	1,89
	X = 200 mm with 200 mm thermal insulation	-	-	-	1,44	-	-	-	-	2,2	-	-	2,26

Tablett DN 75		Hydraulic l/s from flange											
		5 mm	15 mm	25 mm	35 mm	45 mm	55 mm	65 mm	70 mm	75 mm	80 mm	90 mm	100 mm
Pic. 1	with leaf catcher, measured above flange	/	/	0,34	0,61	0,88	1,16	1,61	1,78	2	2,31	2,81	3,12
	with emergency leaf catcher, measured min. 35mm higher than flange	/	0,33	0,57	0,88	1,2	1,38	1,46	1,61	1,72	1,81	1,93	2,1
Pic. 2	X = 110 mm with 110mm thermal insulation	-	-	-	2,43	-	-	-	-	2,43	-	-	3,11
	X = 150 mm with 150mm thermal insulation	-	-	-	2,66	-	-	-	-	2,66	-	-	3,11
	X = 200 mm with 200 mm thermal insulation	-	-	-	3,13	-	-	-	-	3,13	-	-	3,67
Pic. 3	X = 110 mm with 110mm thermal insulation	-	-	-	2,32	-	-	-	-	2,32	-	-	3,02
	X = 150 mm with 150mm thermal insulation	-	-	-	2,61	-	-	-	-	2,61	-	-	3,02
	X = 200 mm with 200 mm thermal insulation	-	-	-	2,96	-	-	-	-	2,96	-	-	3,47
Pic. 4	X = 110 mm with 110mm thermal insulation	-	-	-	1,41	-	-	-	-	1,41	-	-	2,26
	X = 150 mm with 150mm thermal insulation	-	-	-	1,77	-	-	-	-	1,77	-	-	2,26
	X = 200 mm with 200 mm thermal insulation	-	-	-	2,39	-	-	-	-	2,39	-	-	2,84

Tablett DN 110		Hydraulic l/s from flange											
		5 mm	15 mm	25 mm	35 mm	45 mm	55 mm	65 mm	70mm	75mm	80 mm	90 mm	100 mm
Pic. 1	with leaf catcher, measured above flange	/	0,22	0,42	0,71	1,05	1,38	1,8	1,98	2,2	2,48	2,9	3,28
	with emergency leaf catcher, measured min. 35mm higher than flange	/	0,32	0,55	0,83	1,1	1,30	1,48	1,59	1,65	1,76	1,92	2,03
Pic. 2	X = 110 mm with 110mm thermal insulation	-	-	-	2,4	-	-	-	-	2,72	-	-	3,03
	X = 150 mm with 150mm thermal insulation	-	-	-	2,72	-	-	-	-	2,72	-	-	3,03
	X = 200 mm with 200 mm thermal insulation	-	-	-	3,11	-	-	-	-	3,55	-	-	3,66
Pic. 3	X = 110 mm with 110mm thermal insulation	-	-	-	2,3	-	-	-	-	2,7	-	-	2,96
	X = 150 mm with 150mm thermal insulation	-	-	-	2,65	-	-	-	-	2,65	-	-	2,96
	X = 200 mm with 200 mm thermal insulation	-	-	-	2,96	-	-	-	-	3,4	-	-	3,53
Pic. 4	X = 110 mm with 110mm thermal insulation	-	-	-	1,41	-	-	-	-	2,02	-	-	2,23
	X = 150 mm with 150mm thermal insulation	-	-	-	1,56	-	-	-	-	1,56	-	-	2,23
	X = 200 mm with 200 mm thermal insulation	-	-	-	2,39	-	-	-	-	2,7	-	-	2,82